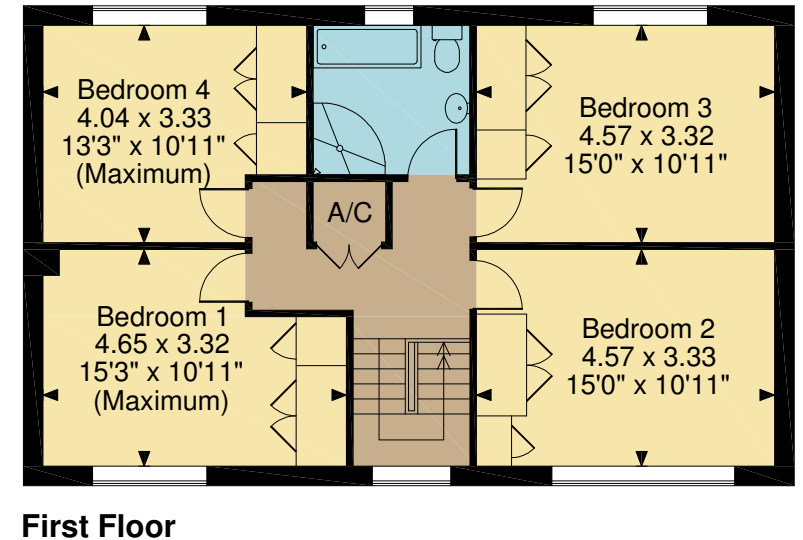
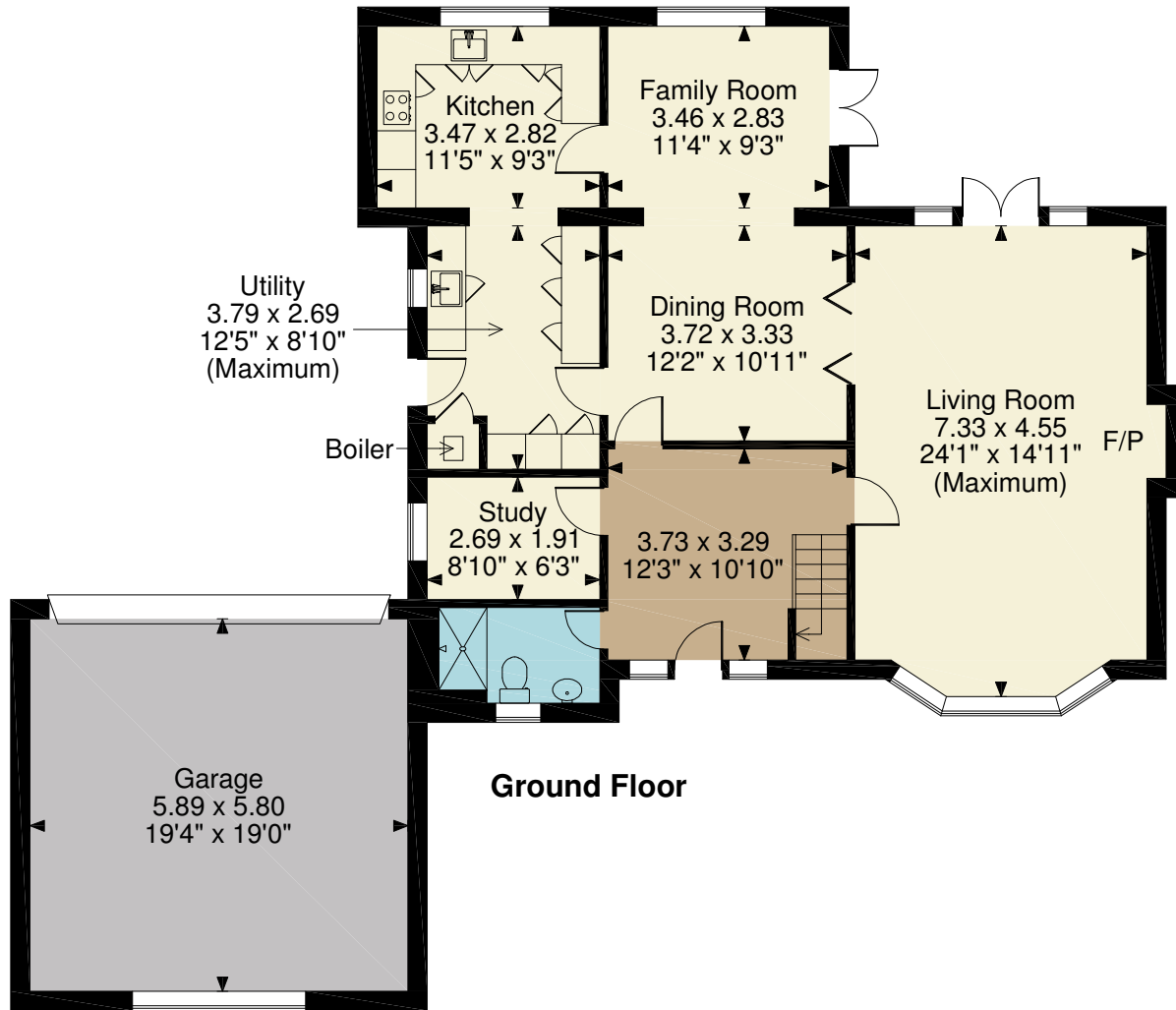


Fishbourne Road West, Chichester
Approximate Gross Internal Area
Main House = 1883 Sq Ft/175 Sq M
Garage = 368 Sq Ft/34 Sq M



FOR ILLUSTRATIVE PURPOSES ONLY - NOT TO SCALE

The position & size of doors, windows, appliances and other features are approximate only.
 Aspire Country House. Unauthorised reproduction prohibited. Drawing ref. dig/8437866/DWL