



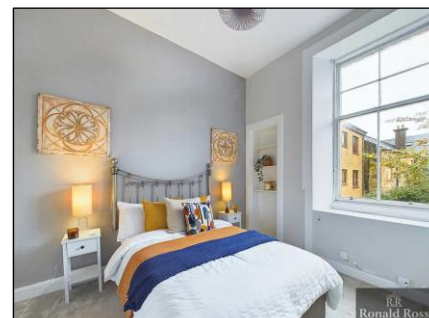

Ronald Ross

Flat/Apartment
38 New Kirk Road, Bearsden
Glasgow
G61 3SL



1  1  1 

Flat/Apartment - Approx Size: 33 sq m



If you are looking for a gorgeous first floor apartment that is in the town centre of Bearsden in East Dunbartonshire this could be the one.

This stunning apartment is presented to the market in superb condition with fresh modern décor throughout.

The layout includes entrance hallway with large storage cupboard, lounge which is laid out as open plan into kitchen, stylish bathroom plus one double sized bedroom that overlooks the communal rear gardens.

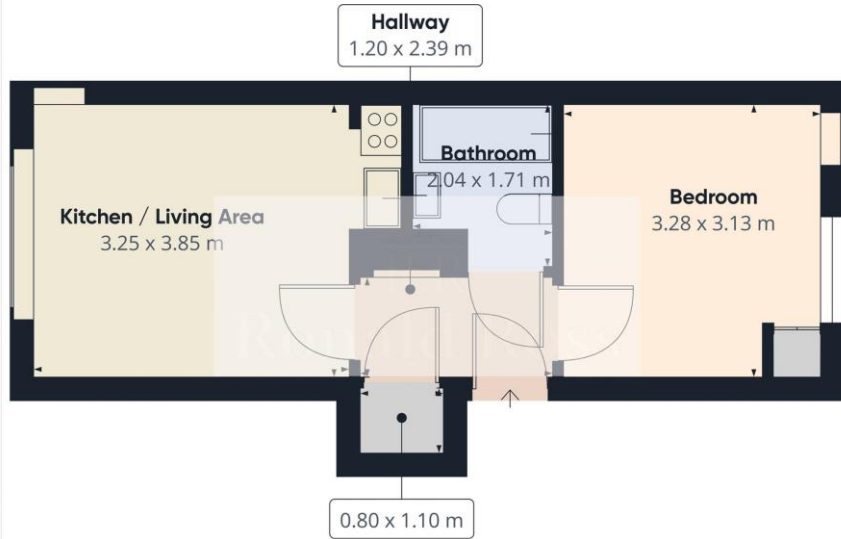
Further benefits include gas central heating plus secure main door entry system.

Local Area:

The suburb of Bearsden is one of Glasgow's most desired districts in which to reside. There are numerous highly acclaimed educational facilities at both Primary and Secondary levels and leisure facilities are plentiful with a choice of private and state gyms and clubs in abundance. Locally, there is an excellent selection of shops and services at Bearsden Cross along with restaurants, cafes and bars. There are excellent bus links nearby and train stations can be found at Hillfoot, Westerton and Bearsden providing regular services into Glasgow's West End and City Centre, including a service to Edinburgh.

Glasgow Airport can be reached within twenty-five minutes off peak and, to the north of Bearsden is the world-renowned Loch Lomond and The Trossachs National Park.

Property Ref:
RRL1000144



Approximate total area⁽¹⁾
32.08 m²

(1) Excluding balconies and terraces

While every attempt has been made to ensure accuracy, all measurements are approximate, not to scale. This floor plan is for illustrative purposes only.
Calculations are based on RICS IPMS 3C standard.

GIRAFFE 360


Ronald Ross

Orbital House, Redwood
Crescent, East Kilbride,
Glasgow G74 5PR

t. 0141 487 6888

sales@ronaldross.co.uk
lettings@ronaldross.co.uk
www.ronaldross.co.uk


find your happy









