

Sole Agent

Grenville Place, Mill Hill, NW7 3AZ

£350,000 Subject to Contract



A stunning one double Bedroom, Manhattan loft style apartment situated on the ground floor of the sought after Lofts development.

Featuring exposed brick and incredible ceiling height (approximately 12ft) with oversized windows. Benefits include an open plan Kitchen/Living/Dining Room, double Bedroom and Bathroom.

The property further benefits from a lift and allocated off street parking behind electric gates, underfloor heating, Miele appliances and a long lease..

The Loft Apartments is superbly located for shopping and transport facilities (Thameslink) of Mill Hill Broadway.

Sole Agent

T: 020 8959 9191

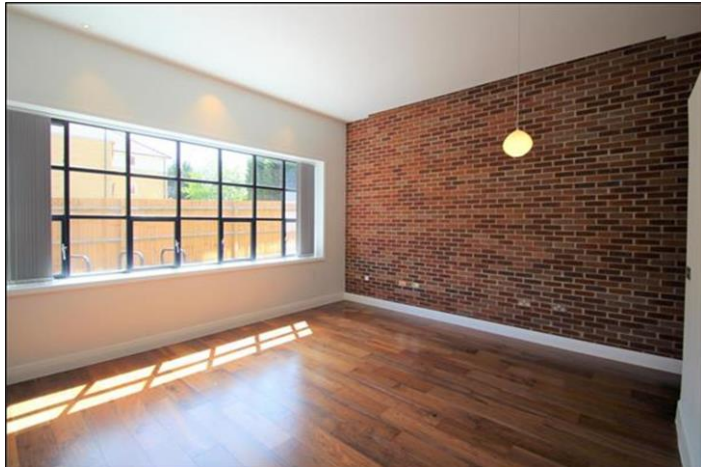
E: enquiries@richardjames.biz

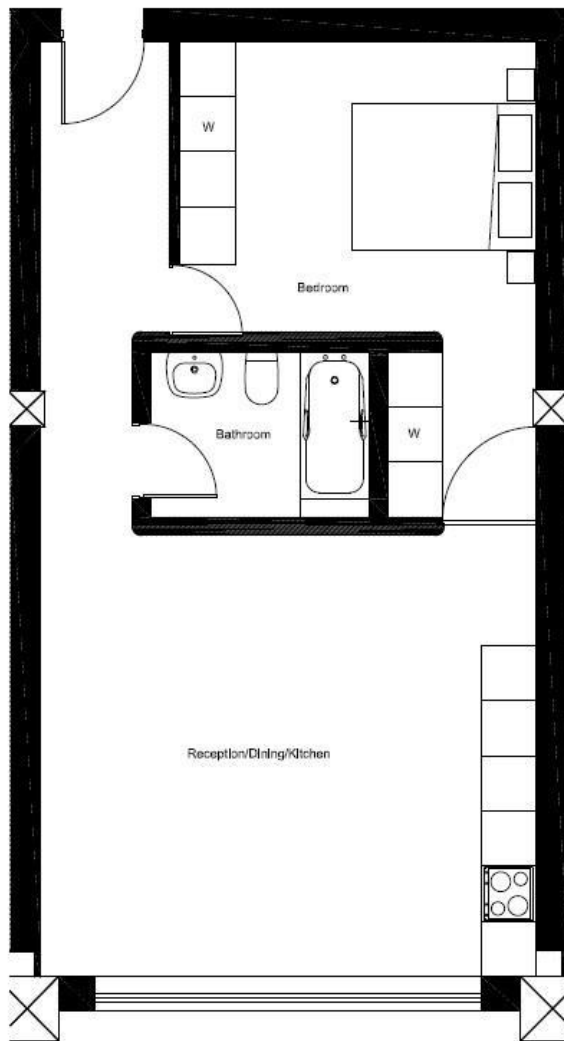
21. the broadway . mill hill . nw7 3da



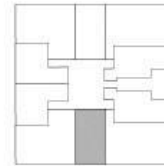
follow us!







LOCATION KEY

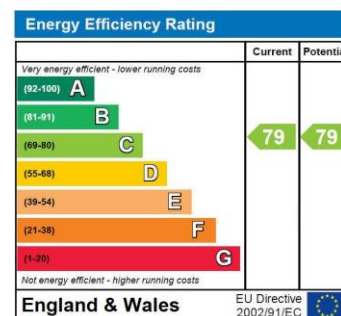


Reception/Dining/Kitchen	5,4m x 4,8m	17'8" x 15'8"
Bedroom	5,2m x 3,8m	17' x 12'5"
Bathroom	2,4m x 1,8m	7'10" x 5'10"
Area	55sqm	592sqft

- ONE DOUBLE BEDROOM
- ALLOCATED OFF STREET GATED PARKING
- ENTRYPHONE SYSTEM
- WALKING DISTANCE TO MILL HILL BROADWAY & EDWARE

- CHAIN FREE
- LIFT
- GROUND FLOOR APARTMENT
-

PRICE - £350,000
TENURE - Freehold
COUNCIL TAX BAND -



As agents we have not tested any apparatus, equipment, fixtures, fittings or services, and so cannot verify that they are in working order or fit for the purpose. As a buyer you are advised to obtain verification from your Solicitor/Conveyancer or Surveyor, if there are any points of particular importance to you. Reference to the tenure of the property is based on information given to us by the seller, as we will not have had sight of the title documents. You are advised to obtain verification from your Solicitor/Conveyancer. Before viewing a property, do please check with us as to its availability, and also request clarification or information on any points of particular interest to you, to save you any possible wasted journeys. Also, photographs are for illustration only and may depict items which are not for sale or included in the sale of the property. All sizes are approximate; all dimensions include wardrobe space where applicable. While we believe that the area of the property has been accurately calculated, any prospective buyer who considers this feature to be particularly important is strongly recommended to have the site measurements checked by their own surveyor before submitting an offer to purchase.