

Sole Agent

7 Seaton Square, Mill Hill, NW7 1GB

£399,950 Subject to Contract



A second floor Two Bedroom, Two Bathroom (one en-suite) flat in the sought after Lidbury Square Development within walking distance of Mill Hill East Northern Line tube station, Waitrose and Virgin Active Gym.

Further accommodation includes reception room with Juliette balcony, fully fitted open plan kitchen and large family bathroom.

Benefits include double glazing throughout, independent gas central heating, entryphone, balance of NHBC guarantee and reserved off street parking.

T: 020 8959 9191

E: enquiries@richardjames.biz

21. the broadway . mill hill . nw7 3da

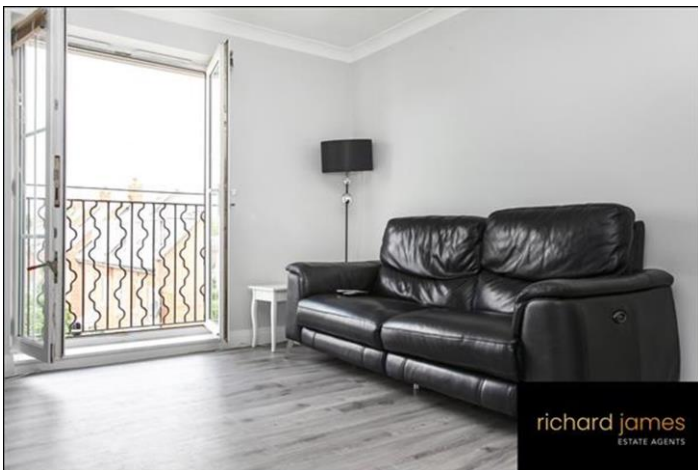
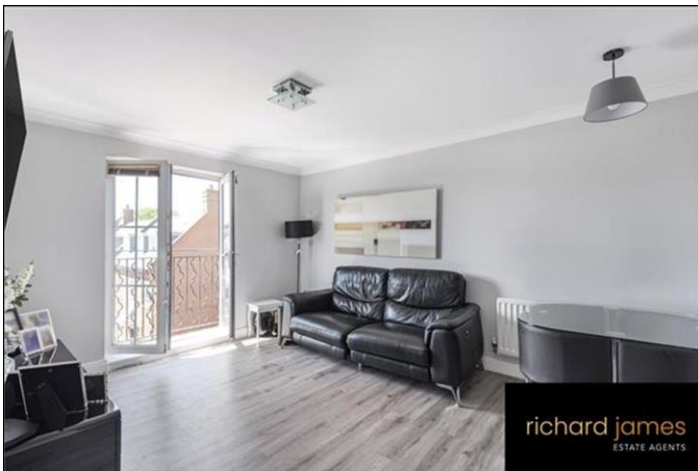


richard james estate agents limited. company number 05101445
registered office address: 4 prince albert road, london, nw1 7sn

follow us!



richardjames.biz



- TWO DOUBLE BEDROOM APARTMENT
- TWO BATHROOMS (ONE EN SUITE SHOWER ROOM)
- WALKING DISTANCE TO LOCAL AMENITIES
- LONG LEASE
-
- ALLOCATED OFF STREET PARKING
- ENTRYPHONE SYSTEM
- JULIET BALCONY
-
-



PRICE: £399,950
TENURE: Freehold
COUNCIL TAX BAND: E
LONDON BOROUGH OF BARNET

As agents we have not tested any apparatus, equipment, fixtures, fittings or services, and so cannot verify that they are in working order or fit for the purpose. As a buyer you are advised to obtain verification from your Solicitor/Conveyancer or Surveyor, if there are any points of particular importance to you. Reference to the tenure of the property is based on information given to us by the seller, as we well not have had sight of the title documents. You are advised to obtain verification from your Solicitor/Conveyancer. Before viewing a property, do please check with us as to its availability, and also request clarification or information on any points of particular interest to you, to save you any possible wasted journeys. Also, photographs are for illustration only and may depict items which are not for sale or included in the sale of the property. All sizes are approximate; all dimensions include wardrobe space where applicable. While we believe that the area of the property has been accurately calculated, any prospective buyer who considers this feature to be particular important is strongly recommended to have the site measurements checked by their own surveyor before submitting an offer to purchase.