

Sole Agent

8 Sebergham Grove, Mill Hill, NW7 2AU

£735,000 Subject to Contract



A well presented chain free, Three Bedroom, Two Bathroom (one en-suite) house built by Laing Homes and situated on the ever popular Caldew Place development.

The house has been well maintained by the current owners with benefits including guest wc, Two Reception Rooms, conservatory, landscaped rear garden and two off street parking spaces.

Sebergham Grove is a cul de sac off Page Street within approximately a mile of Mill Hill Broadway's excellent local shopping facilities and Thameslink Station. Mill Hill Park and the open space of Arrandene are also within close proximity.

Sole Agent.

T: 020 8959 9191

E: enquiries@richardjames.biz

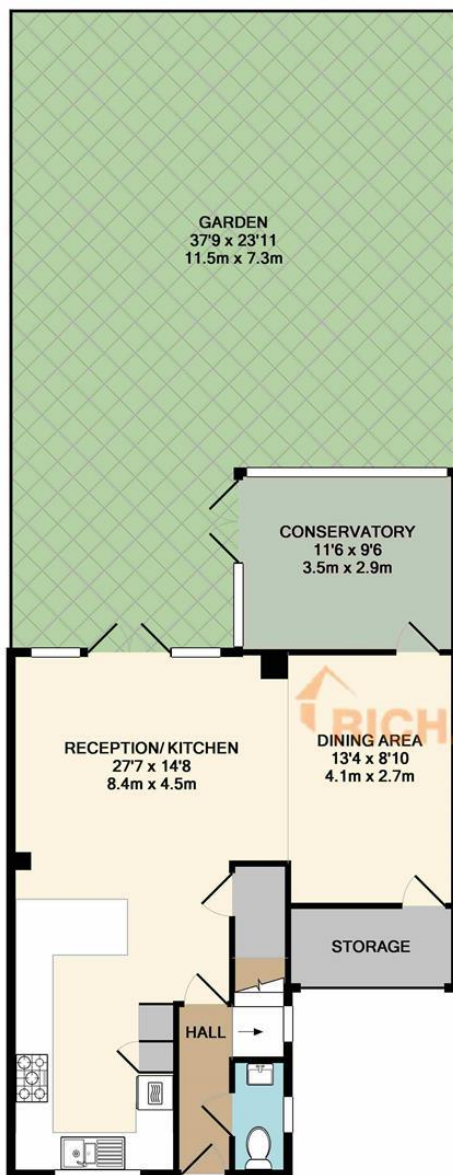
21. the broadway . mill hill . nw7 3da



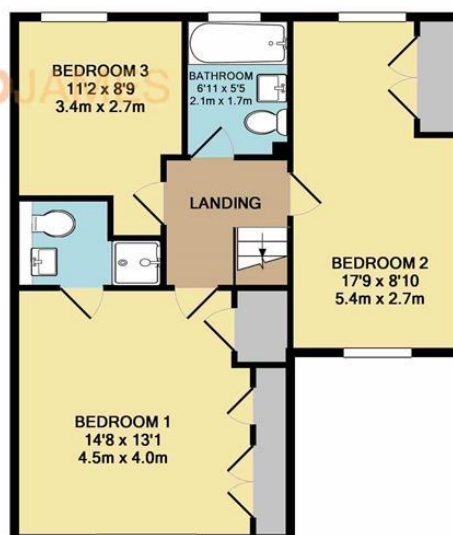
follow us!







GROUND FLOOR



1ST FLOOR

SEBERGHAM GROVE NW7

- SOUGHT AFTER CUL DE SAC LOCATION
- OFF STREET PARKING
- FAMILY HOME
- LANDSCAED REAR GARDEN
- MODERN DEVELOPMENT
- OPEN PLAN KITCHEN



PRICE - £735,000
TENURE - Freehold
COUNCIL TAX BAND - F
BOROUGH - Barnet

As agents we have not tested any apparatus, equipment, fixtures, fittings or services, and so cannot verify that they are in working order or fit for the purpose. As a buyer you are advised to obtain verification from your Solicitor/Conveyancer or Surveyor, if there are any points of particular importance to you. Reference to the tenure of the property is based on information given to us by the seller, as we well not have had sight of the title documents. You are advised to obtain verification from your Solicitor/Conveyancer. Before viewing a property, do please check with us as to its availability, and also request clarification or information on any points of particular interest to you, to save you any possible wasted journeys. Also, photographs are for illustration only and may depict items which are not for sale or included in the sale of the property. All sizes are approximate; all dimensions include wardrobe space where applicable. While we believe that the area of the property has been accurately calculated, any prospective buyer who considers this feature to be particular important is strongly recommended to have the site measurements checked by their own surveyor before submitting an offer to purchase.