

**Sole Agent**

**3 Abbotsview Court, The Ridgeway, Mill Hill, NW7 4EQ**

**£695,000 Subject to Contract**



Situated in one of Mill Hill's most desirable and tranquil locations, close to the village, a stunning Two Bedroom, Two Bathroom (one en suite shower room) first floor apartment with breathtaking views to the rear, set within a newly converted gated development with landscaped gardens, two allocated off street parking spaces, entryphone system, communal gardens and a lift.

The apartment comprises of a large reception room with a fabulous south facing terrace overlooking the grounds and views beyond.

Located close to green belt open spaces yet still only one mile from Mill Hill Broadway's multiple shopping and transport facilities.

Council tax band G

Joint Sole Agent.

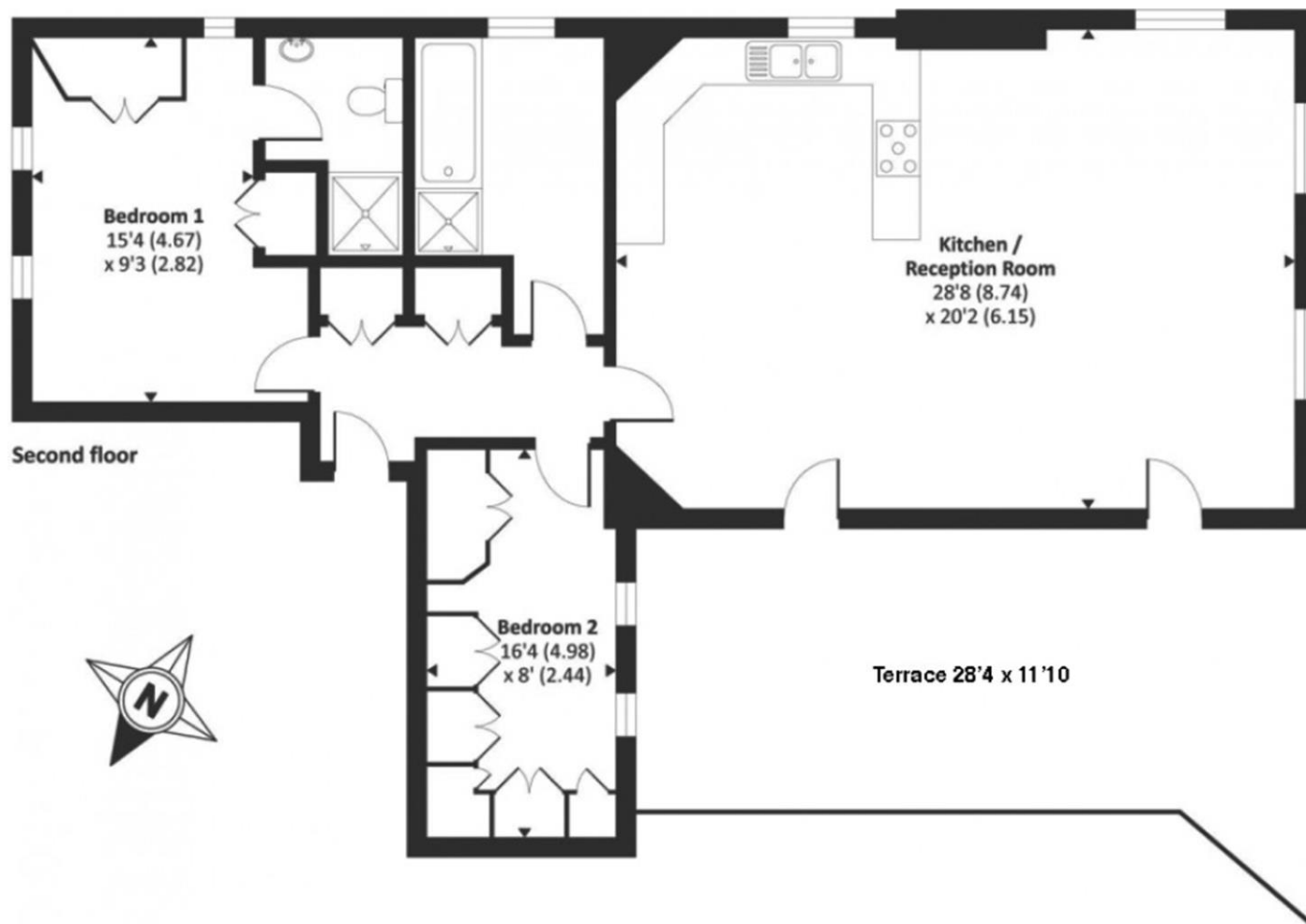
T: 020 8959 9191

E: [enquiries@richardjames.biz](mailto:enquiries@richardjames.biz)

21. the broadway . mill hill . nw7 3da







Approx. Gross internal floor area 1108 SQFT / 102.9 SQM  
Approx. Gross external floor area 1258 SQFT / 116.8 SQM

- TWO BEDROOMS
- TWO BATHROOMS (ONE EN SUITE SHOWER ROOM)
- SECURITY GATES AND ALLOCATED PARKING
- 
- TRIPLE ASPECT RECEPTION ROOM
- KITCHEN/BREAKFAST ROOM
- FABULOUS SOUTH FACING TERRACE
-



**PRICE - £695,000**  
**TENURE - Leasehold**  
**COUNCIL TAX BAND - G**  
**LONDON BOROUGH OF BARNET**

*As agents we have not tested any apparatus, equipment, fixtures, fittings or services, and so cannot verify that they are in working order or fit for the purpose. As a buyer you are advised to obtain verification from your Solicitor/Conveyancer or Surveyor, if there are any points of particular importance to you. Reference to the tenure of the property is based on information given to us by the seller, as we will not have had sight of the title documents. You are advised to obtain verification from your Solicitor/Conveyancer. Before viewing a property, do please check with us as to its availability, and also request clarification or information on any points of particular interest to you, to save you any possible wasted journeys. Also, photographs are for illustration only and may depict items which are not for sale or included in the sale of the property. All sizes are approximate; all dimensions include wardrobe space where applicable. While we believe that the area of the property has been accurately calculated, any prospective buyer who considers this feature to be particular important is strongly recommended to have the site measurements checked by their own surveyor before submitting an offer to purchase.*