



Hayes

£322,500 Leasehold

Stunning Apartment

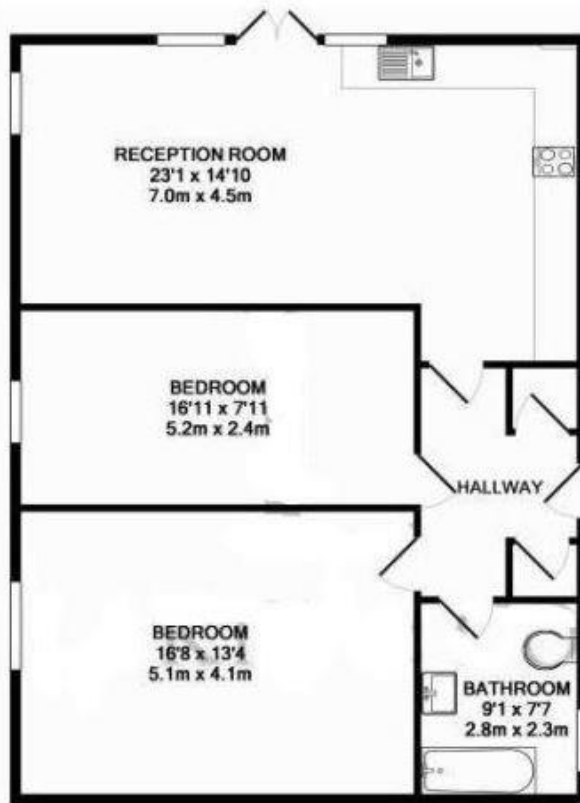
If you are looking for a new two bedroom home that needs to be on the ground floor, has direct access to patio area and in great condition then pick up the phone and book your appointment now. Located close to transport links and offering allocated parking this two bedroom flat is a must on any viewing list. Presenting clean lines and a contemporary feel this property would suit anybody that is looking to move straight in.

Features

- Apartment
- Ground Floor
- Two Bedrooms
- Modern Kitchen
- Bathroom
- Allocated parking
- Patio Area
- Communal Gardens



Floorplan



TOTAL APPROX. FLOOR AREA 902 SQ.FT. (83.8 SQ.M.)

Whilst every attempt has been made to ensure the accuracy of the floor plan contained here, measurements of doors, windows, rooms and any other items are approximate and no responsibility is taken for any error, omission, or mis-statement. This plan is for illustrative purposes only and should be used as such by any prospective purchaser. The services, systems and appliances shown have not been tested and no guarantee as to their operability or efficiency can be given
Made with Metropix ©2016

