



Hayes

£595,000 Freehold

Delightfully Detached

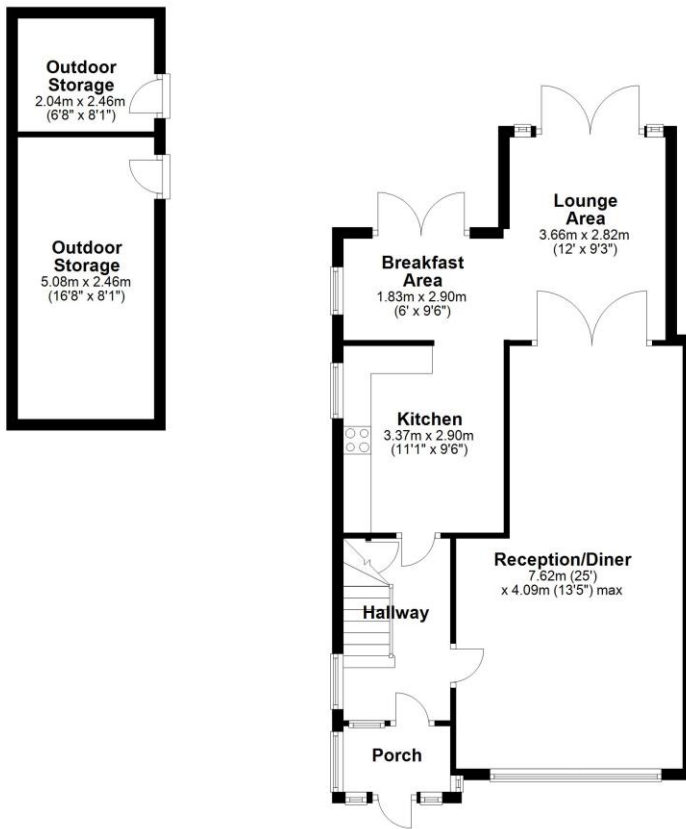
This Beautifully extended detached family home is sure to cause a stir among house hunters. Found in an ideal location, with great access to the Uxbridge Road with its array of shops, restaurants, and transport links. It is rare to find a property that ticks so many boxes, from a perfectly presented interior that has attention to detail high on its agenda to a wonderful outdoor area which would be ideal for inviting friends and family over for a bbq, or for enjoying a quite glass of wine with a book. This home is a must if you are looking for a new home that offers size, style, and potential to extend (subject to council consents).

Features

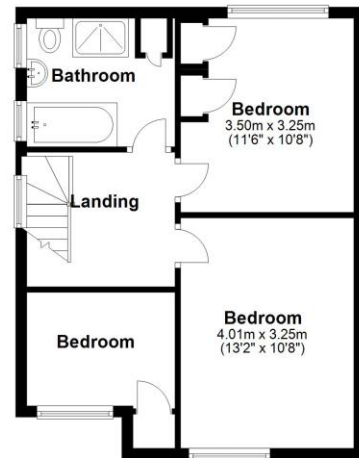
- Detached
- Extended
- Own Drive
- Stunning
- Contemporary
- Ideal Home
- Off Street Parking
- Stunning Condition



Ground Floor



First Floor



Whilst every attempt has been made to ensure the accuracy of the floor plan contained here, measurements of doors, windows, rooms and other items are approximate and no responsibility is taken for any error, omission, or mis-statement. This plan is for illustrative purposes only and should be used as such by any prospective purchaser. The services, systems and appliances shown have not been tested and no guarantee as to their operability or efficiency can be given.
Plan produced using PlanUp.

Energy Efficiency Rating		Current	Potential
Very energy efficient - lower running costs			
(92-100)	A		
(81-91)	B		
(69-80)	C		
(55-68)	D		
(39-54)	E		
(21-38)	F		
(1-20)	G		
Not energy efficient - higher running costs			
		50	76
England & Wales		EU Directive 2002/91/EC	

Environmental Impact (CO ₂) Rating		Current	Potential
Very environmentally friendly - lower CO ₂ emissions			
(92-100)	A		
(81-91)	B		
(69-80)	C		
(55-68)	D		
(39-54)	E		
(21-38)	F		
(1-20)	G		
Not environmentally friendly - higher CO ₂ emissions			
		50	76
England & Wales		EU Directive 2002/91/EC	

Location

