



South Hayes

£550,000 Freehold

JUST THE TICKET

Located a short walk from Hayes and Harlington main line train station, this three bedroom end of terrace house would be ideal for family life or a perfect investment. Benefiting from two reception rooms, and fitted kitchen to ground floor with three bedrooms, family bathroom and separate w.c to first floor. This home further offers, gas central heating, private rear garden, off street parking to the front and is being sold with no onward chain. So, if it sounds like something that would suite you give us a call to find out more.

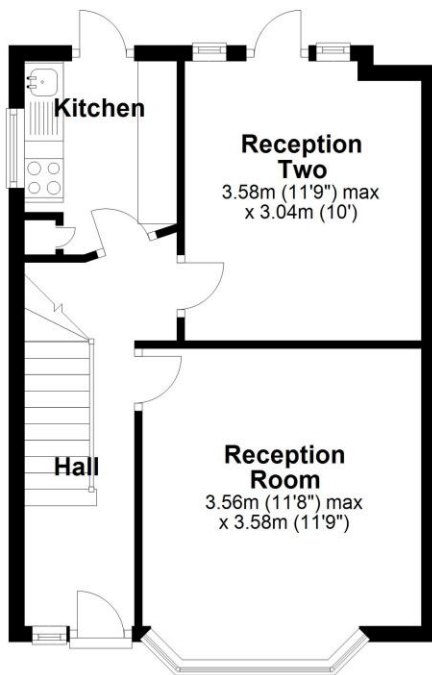
Ref: KPL1000585

Features

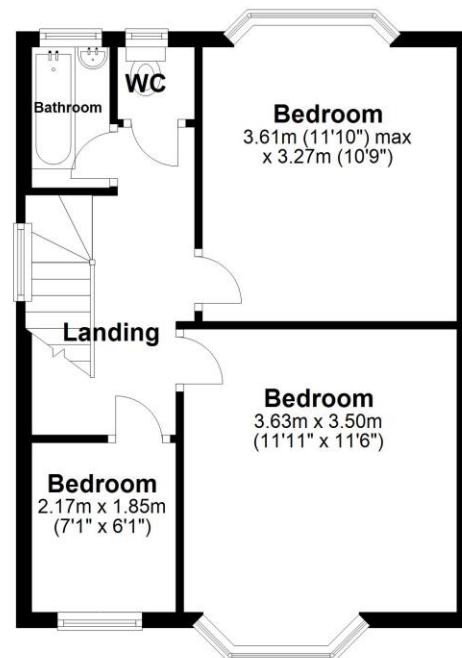
- End of terrace
- Three Bedrooms
- Two reception Rooms
- Fitted kitchen
- Family Bathroom
- Off Street Parking
- Private garden
- South Hayes



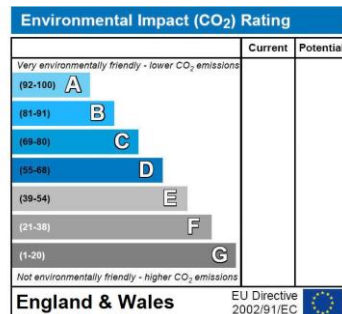
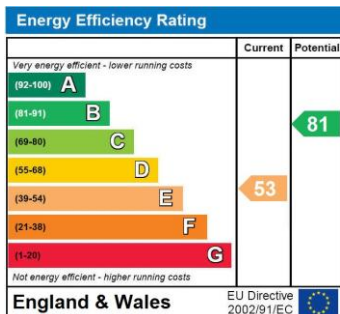
Ground Floor



First Floor



Whilst every attempt has been made to ensure the accuracy of the floor plan contained here, measurements of doors, windows, rooms and other items are approximate and no responsibility is taken for any error, omission, or mis-statement. This plan is for illustrative purposes only and should be used as such by any prospective purchaser. The services, systems and appliances shown have not been tested and no guarantee as to their operability or efficiency can be given.
Plan produced using PlanUp.



Location

