



South Hayes

£625,000 Freehold

SPACE TO EXTEND

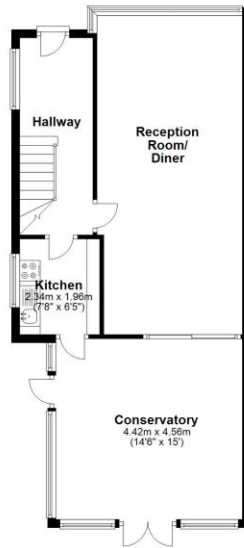
If you are looking for home that offers the opportunity to add more space for your growing family, or a property that will accommodate your current one, this family house is sure to be a contender. Located in South Hayes, this three bedroom semi-detached house would be an ideal purchase, if space, style, and potential is on your mind. Offering, in our opinion, a spacious through lounge, fitted kitchen and conservatory to ground floor. The first floor presents, three bedrooms and family bathroom. The current owners have put their heart and soul into this property over the years, and it is clear to see as the condition of this home, inside and out is one to impress. So, if you think you deserve a property like this, give us a call and let us show you around.

Features

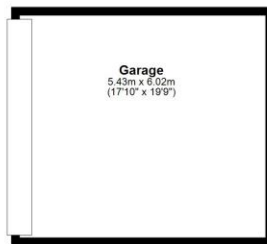
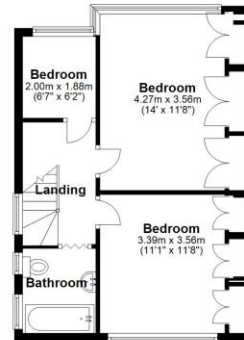
- Space On the Side
- Semi Detached House
- Three Bedrooms
- Through Lounge
- Conservatory
- Fitted Kitchen
- Family Bathroom
- Garage



Ground Floor



First Floor



Whilst every attempt has been made to ensure the accuracy of the floor plan contained herein, measurements of doors, windows, rooms and other items are approximate and no responsibility is taken for any error, omission, or mis-statement. This plan is for illustrative purposes only and should be used as such by any prospective purchaser. The services, systems and appliances shown have not been tested and no guarantee as to their operability or efficiency can be given. Plan produced using PlanUp.

Energy Efficiency Rating		Current	Potential
Very energy efficient - lower running costs			
(92-100)	A		
(81-91)	B		
(69-80)	C		
(55-68)	D		
(39-54)	E		
(21-38)	F		
(1-20)	G		
Not energy efficient - higher running costs			
		59	78
England & Wales		EU Directive 2002/91/EC	

Environmental Impact (CO ₂) Rating		Current	Potential
Very environmentally friendly - lower CO ₂ emissions			
(92-100)	A		
(81-91)	B		
(69-80)	C		
(55-68)	D		
(39-54)	E		
(21-38)	F		
(1-20)	G		
Not environmentally friendly - higher CO ₂ emissions			
England & Wales		EU Directive 2002/91/EC	

Location

