



Hayes

£775.00 pcm

Studio Heaven

If you are looking for your first home and need to be close to transport links and local shops, this property could be perfect for you. Offering an apartment that is presented in good order and ready to move in to straight to. This studio has, in our opinion, a generous living room, with a practical fitted kitchen and bathroom. You will also benefit from an allocated parking space and have access to communal gardens.

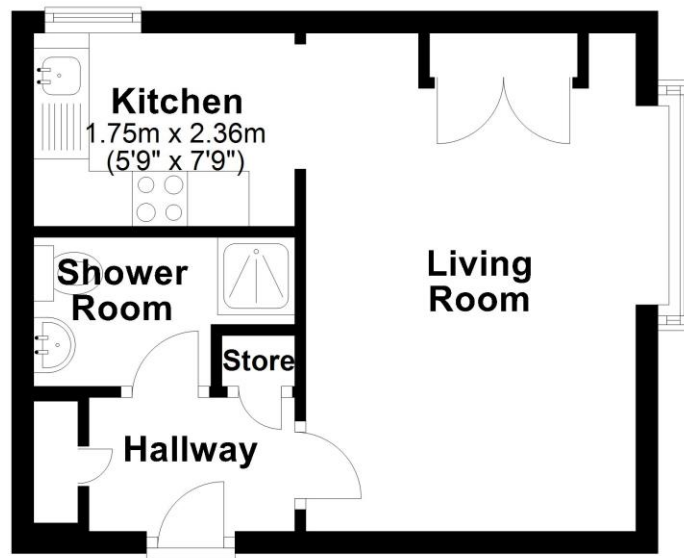
Ref: KPL1000548

Features

- Studio Apartment
- Living Area
- Fitted Kitchen
- Bathroom
- Allocated Parking
- Good Condition
- Storage
- Great Location



First Floor



Whilst every attempt has been made to ensure the accuracy of the floor plan contained here, measurements of doors, windows, rooms and other items are approximate and no responsibility is taken for any error, omission, or mis-statement. This plan is for illustrative purposes only and should be used as such by any prospective purchaser. The services, systems and appliances shown have not been tested and no guarantee as to their operability or efficiency can be given.

Plan produced using PlanUp.

Energy Efficiency Rating		
	Current	Potential
Very energy efficient - lower running costs		
(92-100) A		
(81-91) B		
(69-80) C		
(55-68) D		
(39-54) E		
(21-38) F		
(1-20) G		
Not energy efficient - higher running costs		
England & Wales	EU Directive 2002/91/EC	

Environmental Impact (CO ₂) Rating		
	Current	Potential
Very environmentally friendly - lower CO ₂ emissions		
(92-100) A		
(81-91) B		
(69-80) C		
(55-68) D		
(39-54) E		
(21-38) F		
(1-20) G		
Not environmentally friendly - higher CO ₂ emissions		
England & Wales	EU Directive 2002/91/EC	

Location

