



Central Hayes

£1,300 pcm

The Perfect Start

This One bedroom Maisonette is found less than one mile from Hayes and Harlington Main Line Station and is ideally located for local bus routes and shops. Benefiting from a private garden, you could spend the summer months outside with friends enjoying a BBQ and a cold drink. Offering spacious and well presented accommodation this apartment would suit anybody looking for their first rental home in a central location.

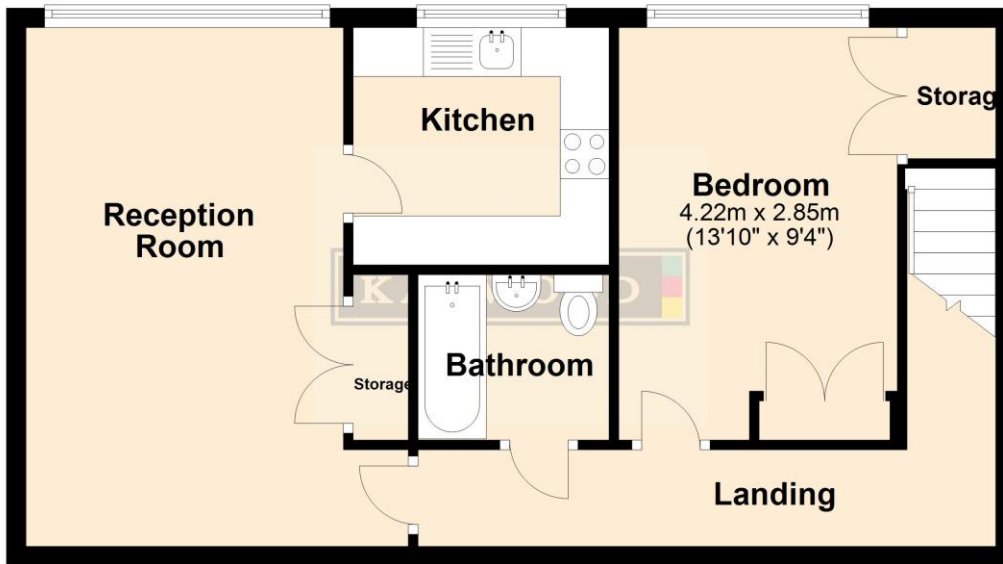
Features

- Maisonette
- One Bedroom
- 17ft Reception Room
- Fitted kitchen
- Bathroom
- Private Gardens
- Resident Parking
- Good Condition



First Floor

Approx. 52.7 sq. metres (567.0 sq. feet)



Total area: approx. 52.7 sq. metres (567.0 sq. feet)

Whilst every attempt has been made to ensure the accuracy of the floor plan contained here, measurements of doors, windows, rooms and other items are approximate and no responsibility is taken for any error, omission, or mis-statement. This plan is for illustrative purposes only and should be used as such by any prospective purchaser. The services, systems and appliances shown have not been tested and no guarantee as to their operability or efficiency can be given.

Plan produced using PlanUp.

Energy Efficiency Rating		Current	Potential
Very energy efficient - lower running costs			
(92-100) A			
(81-91) B			
(69-80) C			
(55-68) D			
(39-54) E		58	63
(21-38) F			
(1-20) G			
Not energy efficient - higher running costs			
England & Wales		EU Directive 2002/91/EC	

Environmental Impact (CO ₂) Rating		Current	Potential
Very environmentally friendly - lower CO ₂ emissions			
(92-100) A			
(81-91) B			
(69-80) C			
(55-68) D			
(39-54) E			
(21-38) F			
(1-20) G			
Not environmentally friendly - higher CO ₂ emissions			
England & Wales		EU Directive 2002/91/EC	

Location

