



OAKVILLE
REAL ESTATE

217 High Street North East Ham London E6 1JG

020 8472 9090

Visit our website for more properties: www.ore.uk.com

Seymour Road, East Ham



For Sale

REF: AAA001373

LEASEHOLD

£250,000

- 2 Bedroom Apartment
- Located on the 7th Floor
- Lounge
- Kitchen
- 3pc Bathroom Suite
- Gas Central Heating
- Double Glazed Throughout
- Lift Service
- Lease: 125 Years from December 2002
- Ground Rent:



We are delighted to offer this 2 BEDROOM flat within close proximity to UPTON PARK STATION. The property consists of 2 large bedrooms, kitchen, 3pc bathroom suite, and lounge. The property also benefits from double glazed windows throughout and gas central heating. The lease was 125 years from December 2002 with a £10 ground rent.



The Accommodation Comprises:

Hall -
Airing cupboard, fitted carpet flooring, ceiling with pendant light

Bedroom 1 -
Double glazed window to side, radiator, fitted carpet flooring, power point(s), ceiling with pendent lighting.

Reception -
Double glazed window to rear, double glazed window to side, radiator, fitted carpet flooring, telephone point(s), TV point(s), power point(s), textured ceiling with fluorescent lighting, open plan, door to study.

Study -
Double glazed window to side, radiator, fitted carpet flooring, power point(s), textured ceiling with fluorescent lighting.

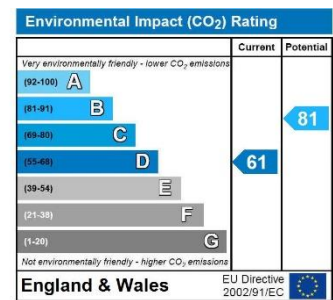
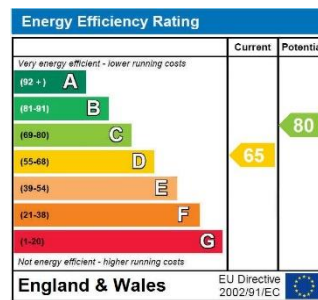
Bathroom -
Fitted with two piece suite comprising bath and wash hand basin, heated towel rail, opaque double glazed window to side, vinyl flooring, ceiling with ceiling light.

Bedroom 2 -
Double glazed window to side, radiator, fitted carpet flooring, power point(s), ceiling with pendent lighting.

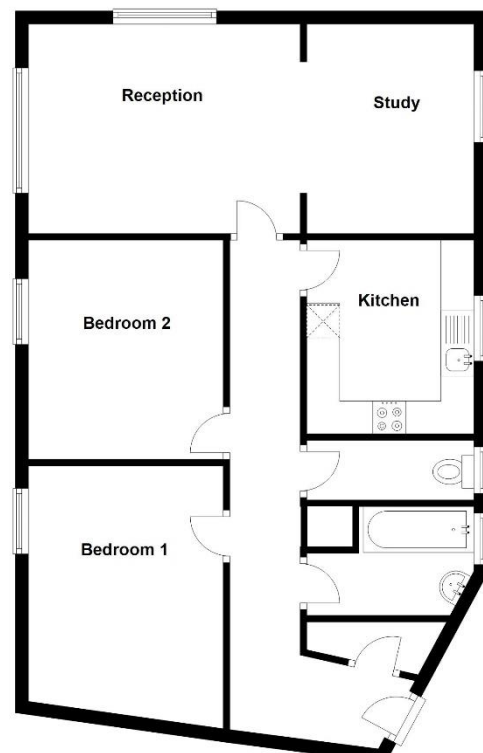
WC -
Opaque double glazed window to side, fitted with WC, vinyl flooring, ceiling with ceiling light.

Kitchen -
Fitted with a base and eye level units with worktop space over with drawers, stainless steel sink with single drainer and mixer tap, space for fridge/freezer, washing machine and cooker, double glazed window to side, vinyl flooring, ceiling with ceiling light.

Energy Performance Certificate -



Seventh Floor 2 Bedroom Flat
Approx. 79.3 sq. metres (853.3 sq. feet)



All Photographs are for guidance purposes only, items, fixture & fitting shown are not included unless specified separately. No responsibility is accepted as to the accuracy of these particulars or statements made by our principles or staff concerning the above property and any intending purchaser must satisfy themselves as to the correctness of such statements and there particulars.