



Hayes

£289,950 Leasehold

IDEAL FIRST TIME BUY

If you're looking for your first property then this may be your answer.....This ground floor maisonette comes with two bedrooms, lounge, kitchen and bathroom. The rear garden has easy access straight from your kitchen and is surrounded by fencing, ideal for those summer days. The property also benefits from having off street parking too, so you're able to park your pride and joy off the road. Within easy reach of local transport, shops and schools this maisonette really ticks all the boxes. Call now to book viewing.

Ref: KPL1000296

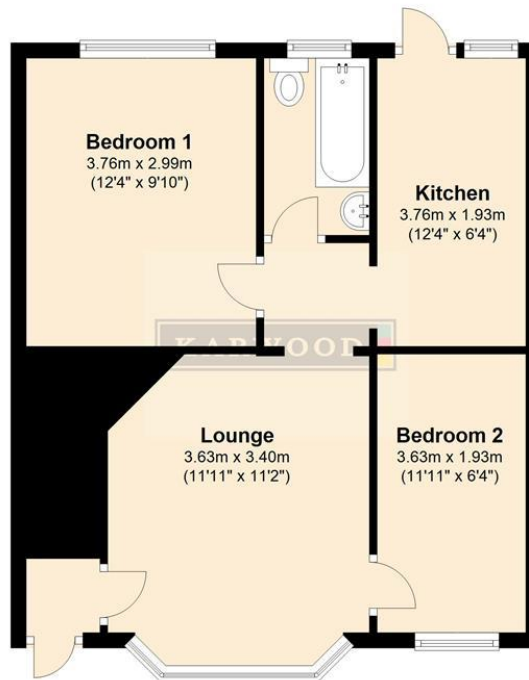
Features

- Maisonette
- Two Bedrooms
- Ground Floor
- Private garden
- Fitted kitchen
- Bathroom
- Chain Free
- Off Street Parking



Ground Floor

Approx. 48.8 sq. metres (525.1 sq. feet)



Total area: approx. 48.8 sq. metres (525.1 sq. feet)

Whilst every attempt has been made to ensure the accuracy of the floor plan contained here, measurements of doors, windows, rooms and other items are approximate and no responsibility is taken for any error, omission, or mis-statement. This plan is for illustrative purposes only and should be used as such by any prospective purchaser. The services, systems and appliances shown have not been tested and no guarantee as to their operability or efficiency can be given.

Plan produced using PlanUp.

Energy Efficiency Rating		Current	Potential
Very energy efficient - lower running costs			
(92-100) A			
(81-91) B			
(69-80) C			
(55-68) D			
(39-54) E			
(21-38) F			
(1-20) G			
Not energy efficient - higher running costs			
		39	76
England & Wales	EU Directive 2002/91/EC		

Environmental Impact (CO ₂) Rating		Current	Potential
Very environmentally friendly - lower CO ₂ emissions			
(92-100) A			
(81-91) B			
(69-80) C			
(55-68) D			
(39-54) E			
(21-38) F			
(1-20) G			
Not environmentally friendly - higher CO ₂ emissions			
		37	79
England & Wales	EU Directive 2002/91/EC		

Location

