



North Hayes

£289,950 Leasehold

SIZE DOES MATTER

You will not be disappointed if you choose to become the new owner of this two double bedroom apartment. Offering the perfect opportunity for any first time buyer or as the ideal investment this property is sure to meet both requirements. Found in a convenient part of North Hayes with good access to local buses and shops getting around without a car should not be a problem.

Ref: KPL1000276

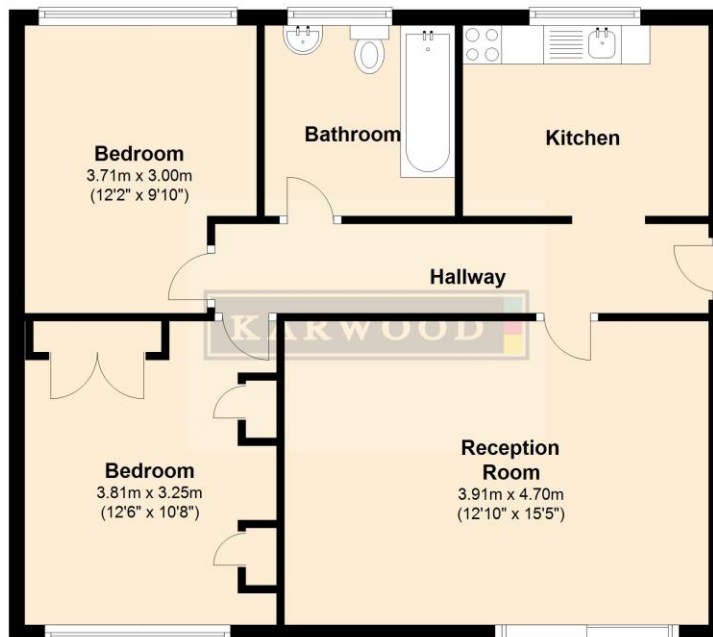
Features

- Apartment
- Two Double Bedrooms
- Reception Room
- Kitchen
- Bathroom
- Gas Central Heating
- Great Location
- Balcony



Ground Floor

Approx. 64.7 sq. metres (696.1 sq. feet)



Total area: approx. 64.7 sq. metres (696.1 sq. feet)

Whilst every attempt has been made to ensure the accuracy of the floor plan contained here, measurements of doors, windows, rooms and other items are approximate and no responsibility is taken for any error, omission, or mis-statement. This plan is for illustrative purposes only and should be used as such by any prospective purchaser. The services, systems and appliances shown have not been tested and no guarantee as to their operability or efficiency can be given.

Plan produced using PlanUp.

Energy Efficiency Rating		Current	Potential
Very energy efficient - lower running costs			
(92-100)	A		
(81-91)	B		
(69-80)	C		
(55-68)	D		
(39-54)	E	49	67
(21-38)	F		
(1-20)	G		
Not energy efficient - higher running costs			
England & Wales		EU Directive 2002/91/EC	

Environmental Impact (CO ₂) Rating		Current	Potential
Very environmentally friendly - lower CO ₂ emissions			
(92-100)	A		
(81-91)	B		
(69-80)	C		
(55-68)	D		
(39-54)	E	42	61
(21-38)	F		
(1-20)	G		
Not environmentally friendly - higher CO ₂ emissions			
England & Wales		EU Directive 2002/91/EC	

Location

